

*Hudson Music  
presents*

# Jason Bittner

# WHAT DRIVES THE BEAT

Edited by Joe Bergamini



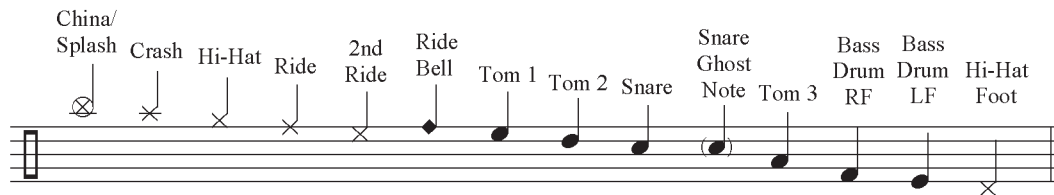
PDF Design by Joe Bergamini and Willie Rose

DVD Produced by Paul Siegel and Rob Wallis

Co-produced by Greg McKean and Joe Bergamini

Photos by Andrew Lepley

## DRUM KEY:



Note: All exercises in this PDF are numbered to correspond with the numbers that appear on the screen in the DVD. Double-bass examples that are notated for the ride can be practiced on the hi-hat, and vice versa.



Copyright © 2008 Hudson Music LLC  
All Rights Reserved  
www.hudsonmusic.com

[www.drumgalaxy.ru](http://www.drumgalaxy.ru)

## METALFY

The idea behind this section is to take non-rock stylistic concepts and apply them in a metal style, or “metalfy” them. First, Jason demonstrates a groove as it would be played in a given style, followed by the metalfied version.

### Samba

24a Musical notation for a Samba groove in 4/4 time. The top staff shows a melody with eighth notes and rests, marked with 'x' for accents. The bottom staff shows a bass line with eighth notes and rests.

### Metalfied

Musical notation for the metalfied Samba groove. The top staff melody is more aggressive, with accents and a different rhythmic feel. The bottom staff bass line is more driving and consistent in rhythm.

### Reggae/Ska feel

24b Musical notation for a Reggae/Ska feel groove in 4/4 time. The top staff melody features a prominent off-beat eighth note pattern. The bottom staff bass line is a simple, steady eighth-note pattern.

### Metalfied

Musical notation for the metalfied Reggae/Ska feel groove. The top staff melody is more complex and rhythmic. The bottom staff bass line is more intricate, featuring triplets and syncopation.

### Reggae/Ska feel 2

24c Musical notation for a second Reggae/Ska feel groove. The top staff melody includes triplets and off-beat patterns. The bottom staff bass line is a simple eighth-note pattern.

### Metalfied

Musical notation for the metalfied second Reggae/Ska feel groove. The top staff melody is more complex and rhythmic, featuring triplets. The bottom staff bass line is more intricate, featuring triplets and syncopation.

Country

24d

Metalfied

Funk

24e

Metalfied, used in the song "Stormwinds"

24f

Nanigo

24g

Metalfied, as used in "Gouging"

24h

Slow Blues

24i

Metalified

Shuffle

24j

Shuffle used in the song "Failure of the Devout"

24k

